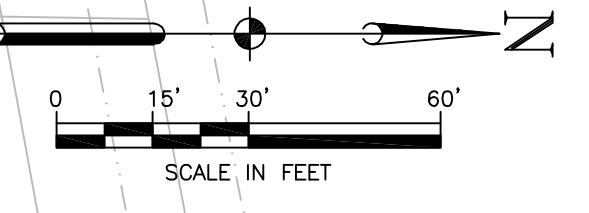
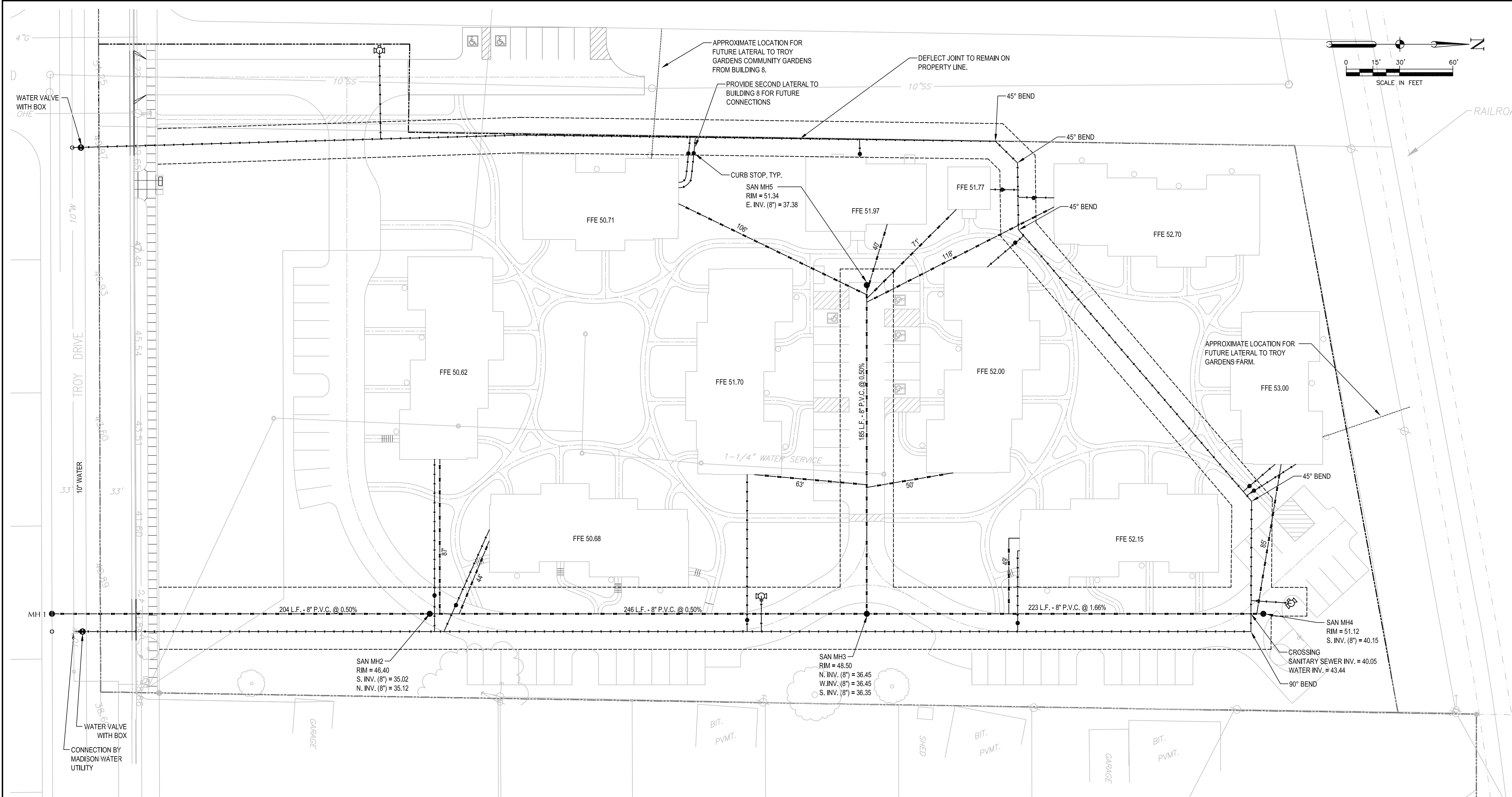


**TROY GARDENS
PUD**
602 Troy Drive
Madison, WI 53704
Owner:
**MADISON COMMUNITY
LAND TRUST**

JJR landscape architecture
planning
urban design
civil engineering
environmental science
JJR, LLC
625 WILLIAMSON STREET,
MADISON, WISCONSIN 53703
608.251.1177 T
608.251.6147 F
www.jjr-us.com

ISSUED FOR	REV	DATE

SEALS AND SIGNATURES



- LEGEND**
- CURB STOP
 - SANITARY MANHOLE
 - ⊕ WATER VALVE
 - ⊕ HYDRANT
 - EXISTING MANHOLE
 - SAN — SANITARY SEWER
 - +—+—+ WATER MAIN
 - - - - - EASEMENT

- NOTES:**
1. WATER MAIN AND SANITARY SEWER SHALL BE INSTALLED BY A PRE-QUALIFIED CONTRACTOR IN THE CITY OF MADISON. CONSTRUCTION SHALL BE IN ACCORDANCE WITH THE CITY OF MADISON STANDARDS.
 2. WATER MAIN AND LATERALS SHALL BE A MINIMUM OF SIX AND A HALF (6½) FEET OF COVER FROM FINAL GRADE.
 3. FINAL LATERAL/SERVICE LOCATIONS TO BE DETERMINED BY DEVELOPER/BUILDER PRIOR TO CONSTRUCTION.

DRAWING TITLE
Utility Plan

SCALE **24257.001**

PROJECT NUMBER

DRAWING NUMBER **106**